



CUMBUKO INTERNACIONAL
— TRUE ENDLESS SUMMER —



CUMBUCO INTERNACIONAL
THE BEACHES SUMMER

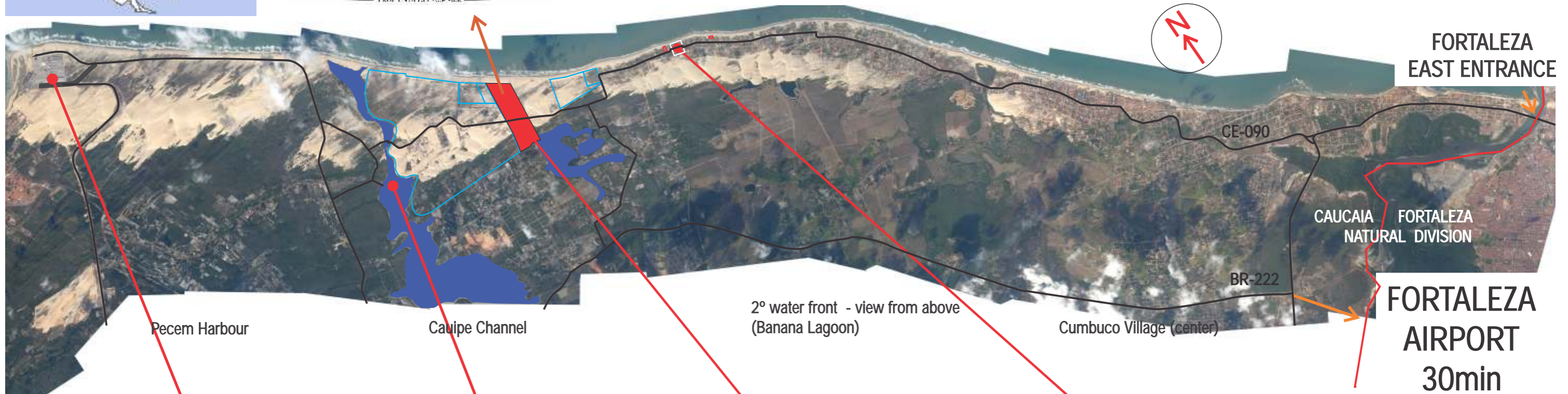
- Located at Cumbuco beach
- 30km (18.6 miles) from international airport and Fortaleza city
- 10km (6.2 miles) from Pecem Harbour
- Two major access options
- Two water front

CLIMATE

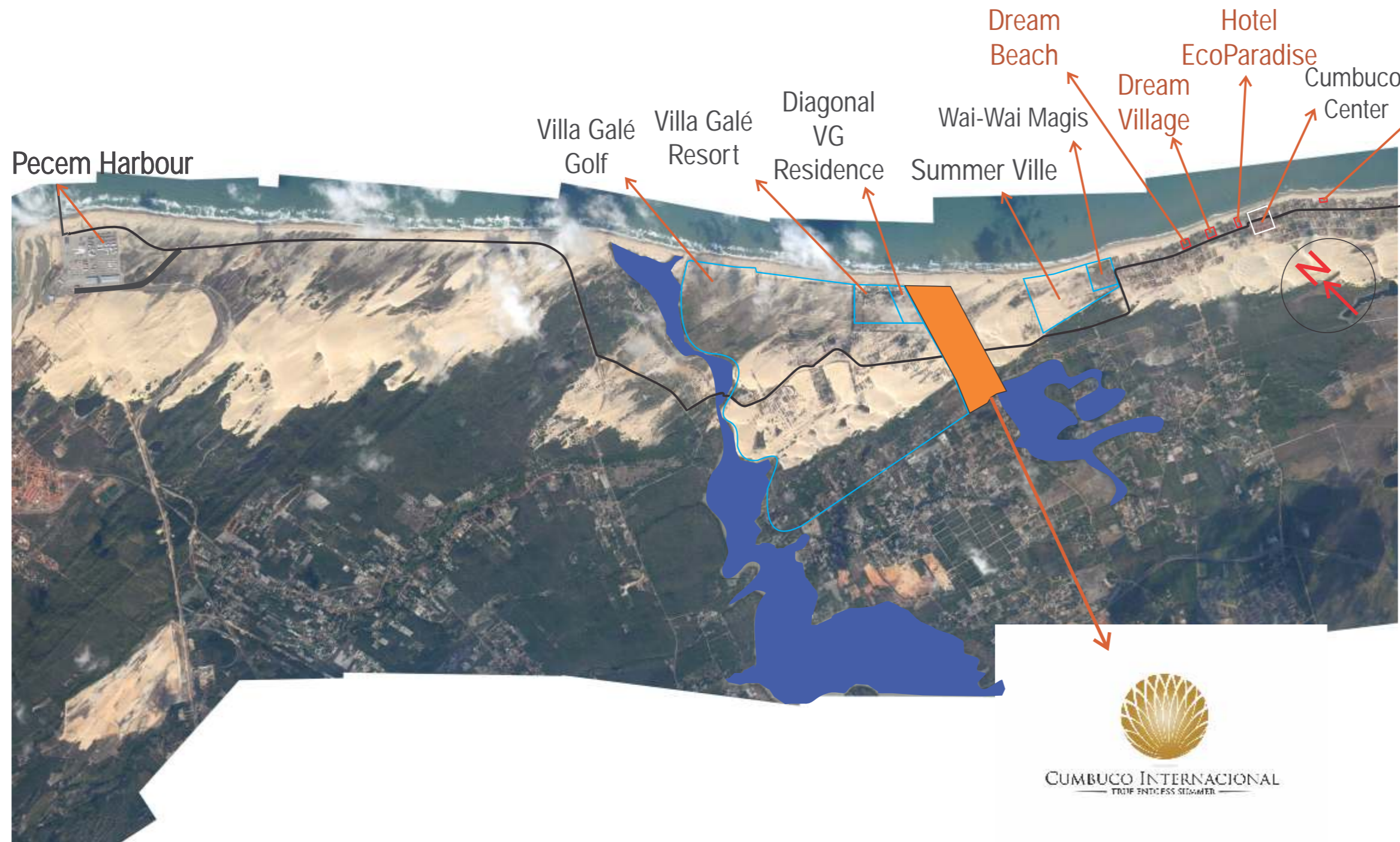
Due to factors such as geographic location, around 2° below the equatorial line, Ceará has a good weather and is bright and sunny almost all year round. On the coast, the average temperature usually ranges from 24°C (75.2°F) to 30°C (86°F). On the mountains, the weather is coolish, reaching 18°C (64.4°F) or 16°C (60.8°F), during the night. The location of the State in the semi-arid causes light rainfall and concentration of showers in March and April. However, even in this period, it is not cold.

WATER CONDITIONS AND TEMPERATURE

In Ceará, bathing in the sea is delicious all year round. Due to the local weather, the temperature of the water is always pleasant, around 27°C (80.6°F). All over the coastline of the State, there are adequate beaches for bathing and even in the urban area of Fortaleza, tourists will find excellent areas to refresh, either on Beira Mar Avenue or at Futuro Beach. But nothing compared to the Cumbuco atmosphere.



Location - Surrounding



Dream Beach Ocean View



View from above - South-North



View from above - West-East



Dream Beach



Dream Beach - Ocean View



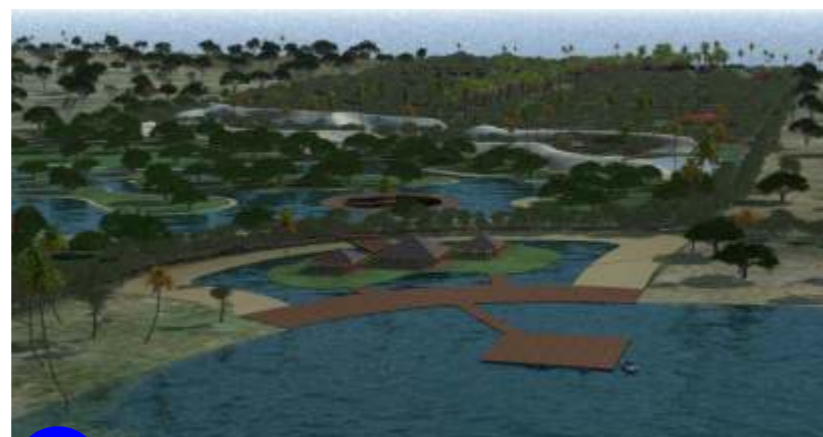
Cumbuco Dream Village



Masterplan



① COND. DREAM VILLAGE



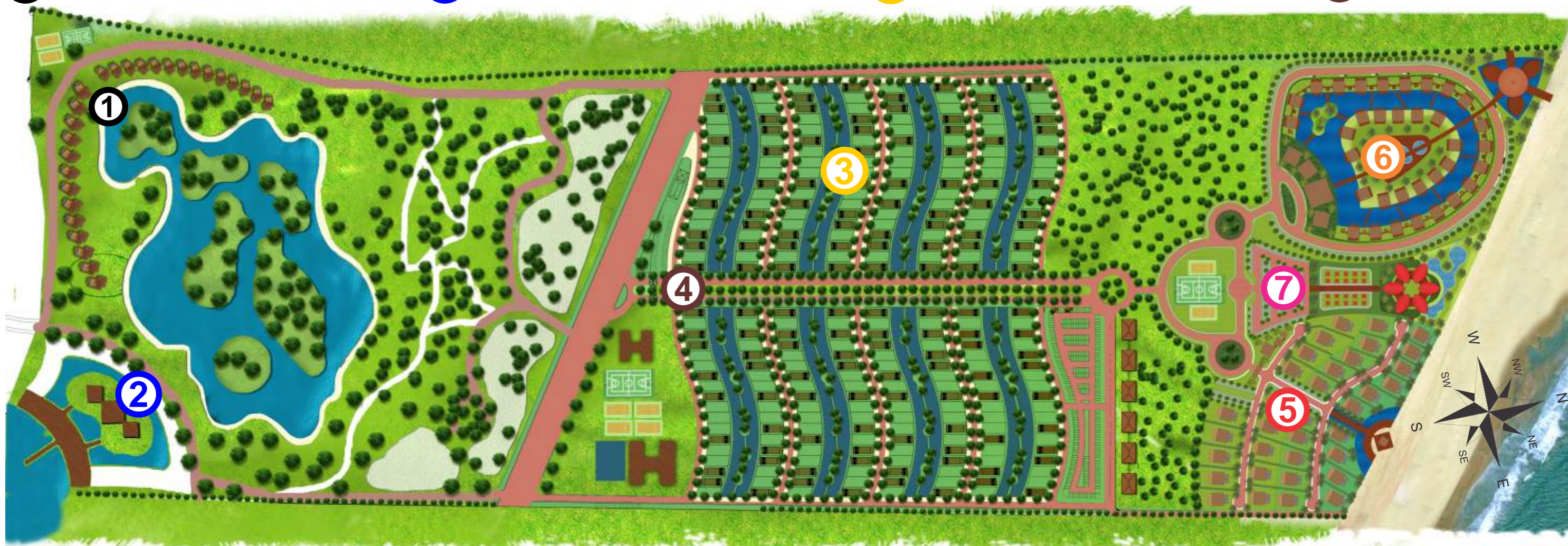
② ECOLOGIC PARK & WATER CLUB



③ VILA DAS MARÉS



④ MAIN ACESS



⑤ PRIVATE HOUSES COND.



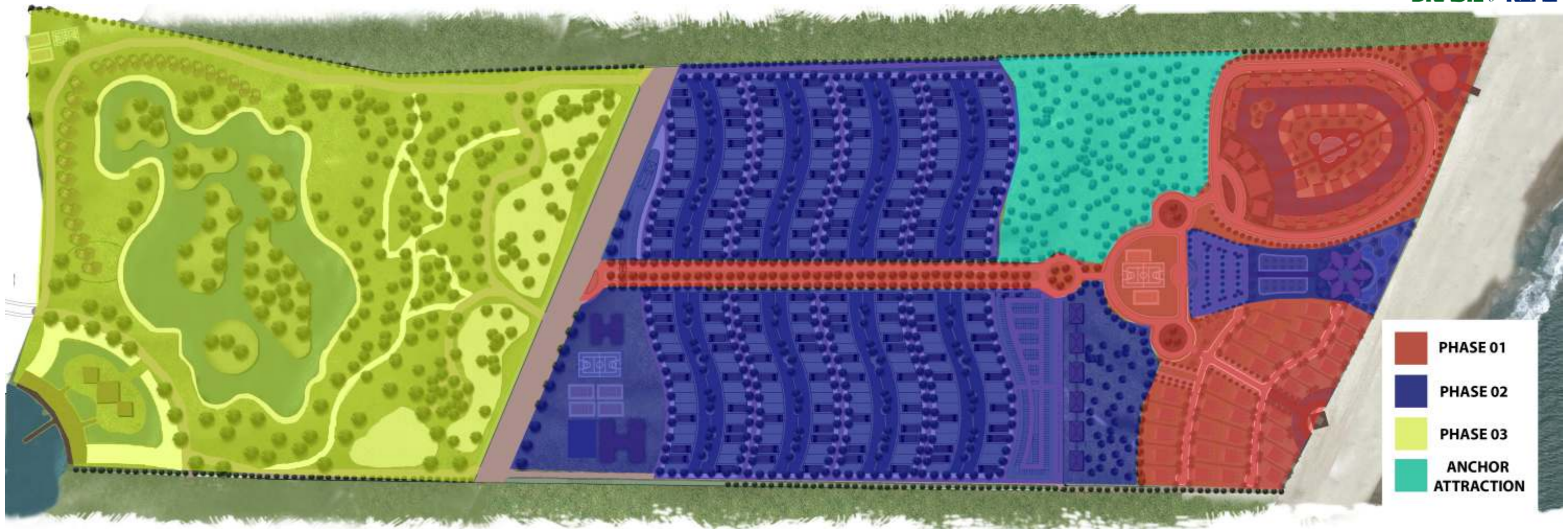
⑥ CONDORESORT HOTEL



⑦ VILLA DA PRAIA BEACH POINT



Masterplan - Phases



Masterplan - Beachfront



① THE RESIDENCES COND.

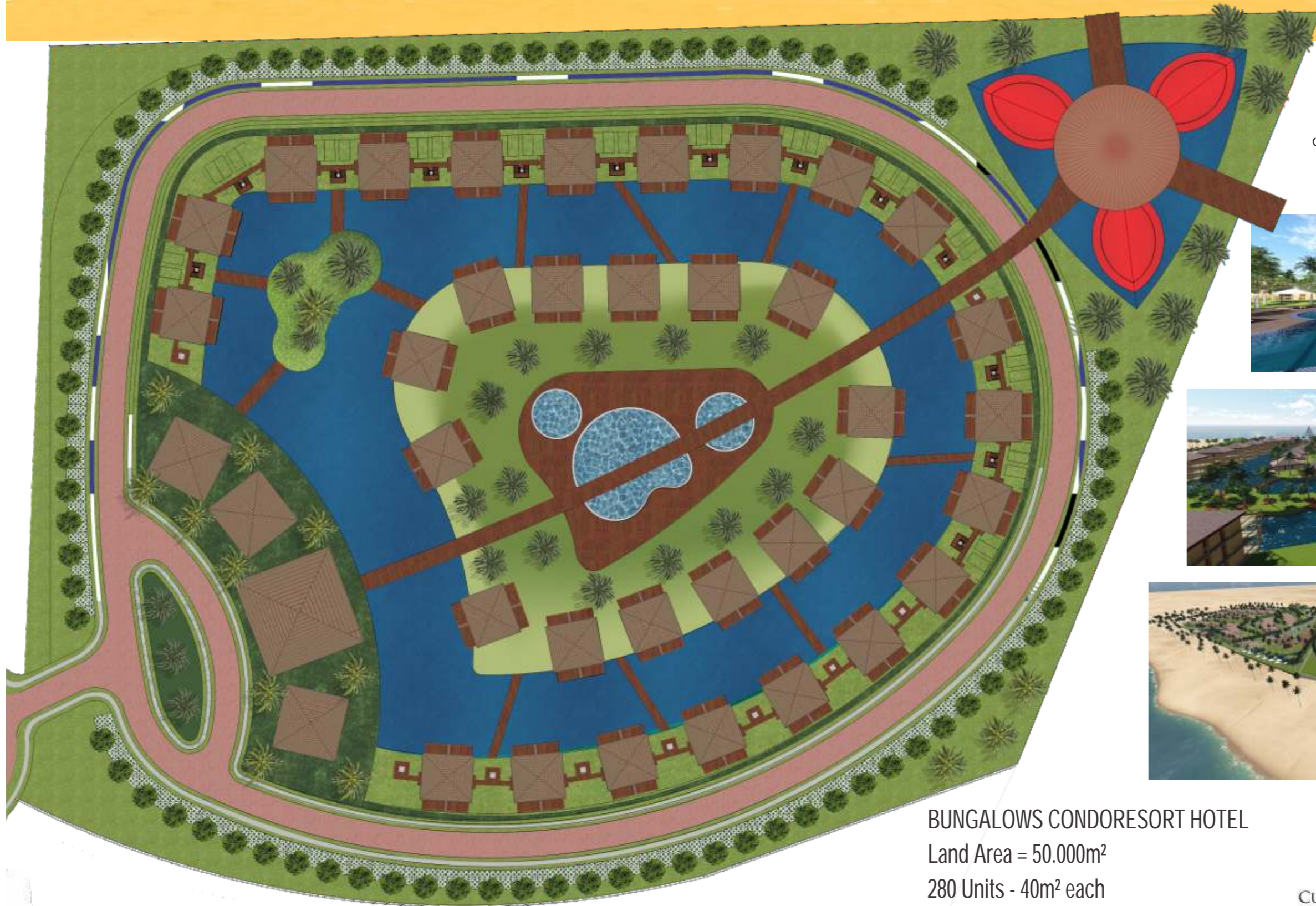


② BUNGALOW CONDO RESORT HOTEL



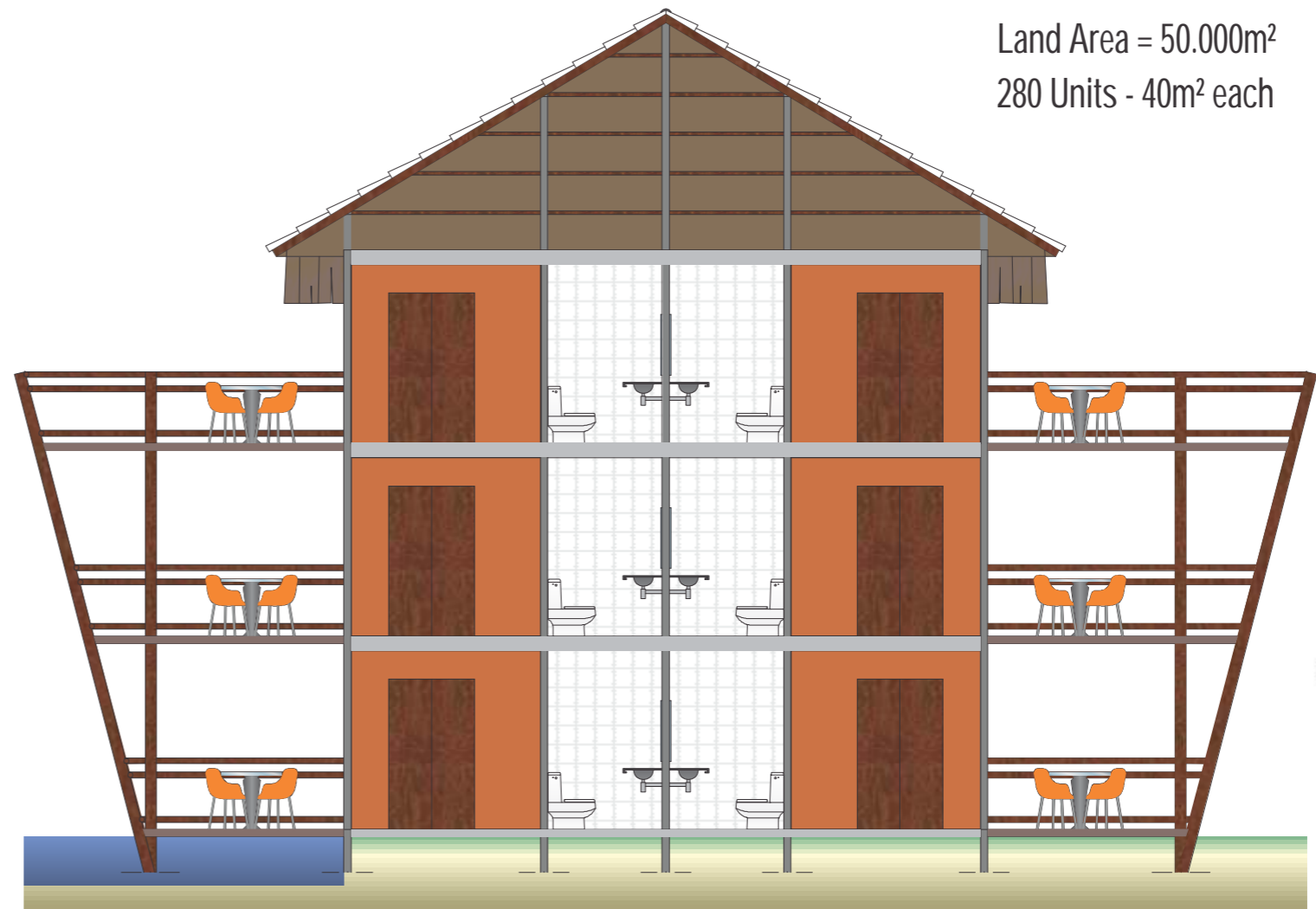
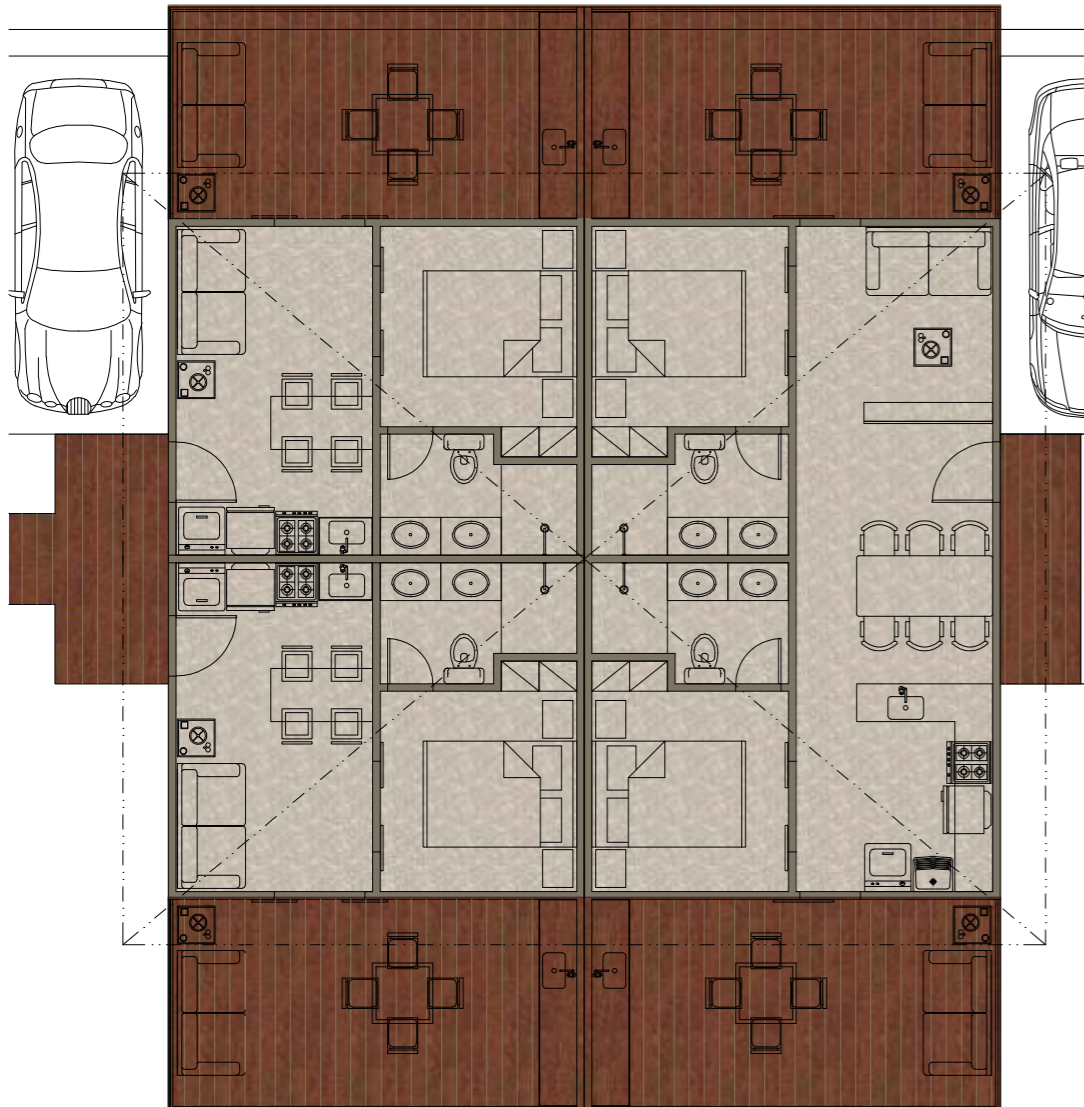
③ VILA DA PRAIA BEACH POINT

HOTEL - Situation plan



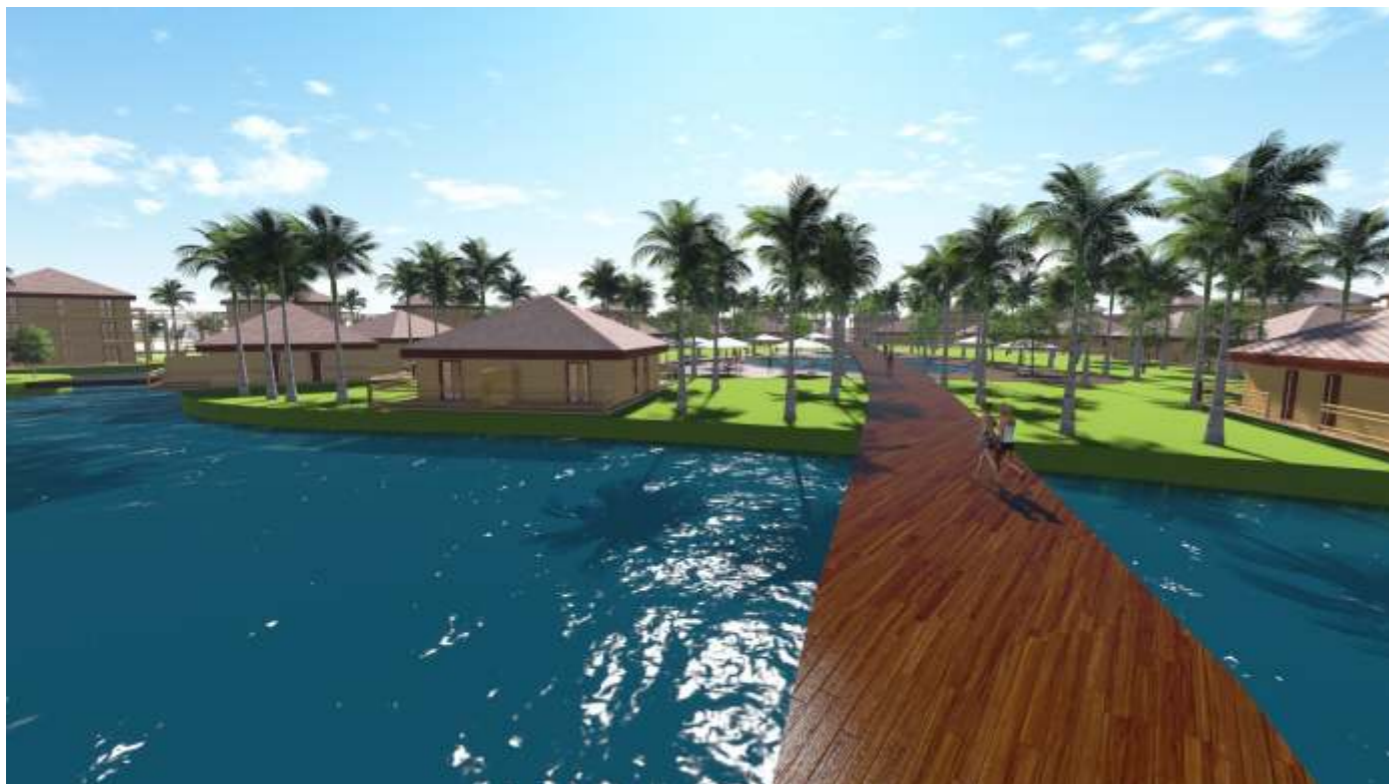
BUNGALOWS CONDORESORT HOTEL
Land Area = 50.000m²
280 Units - 40m² each

HOTEL - The Bungalow

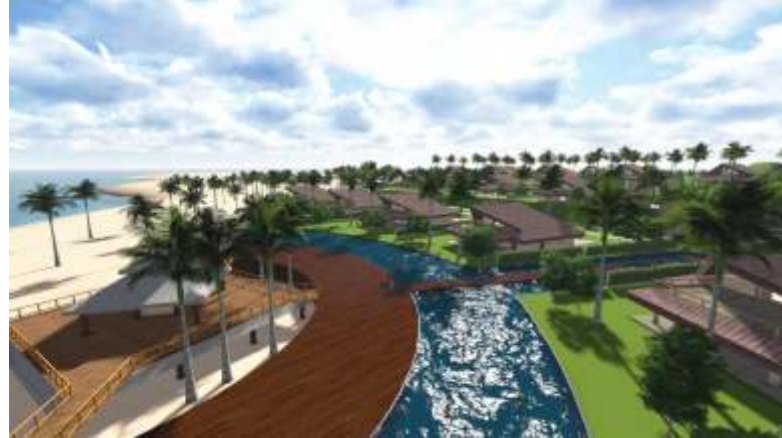


BUNGALOWS CONDORESORT HOTEL
Land Area = 50.000m²
280 Units - 40m² each





THE RESIDENCES CONDOMINIUM - Situation



Cumbuco Internacional - The Residences

Land Area = 30.000m²

34 Beach houses - 200m² each

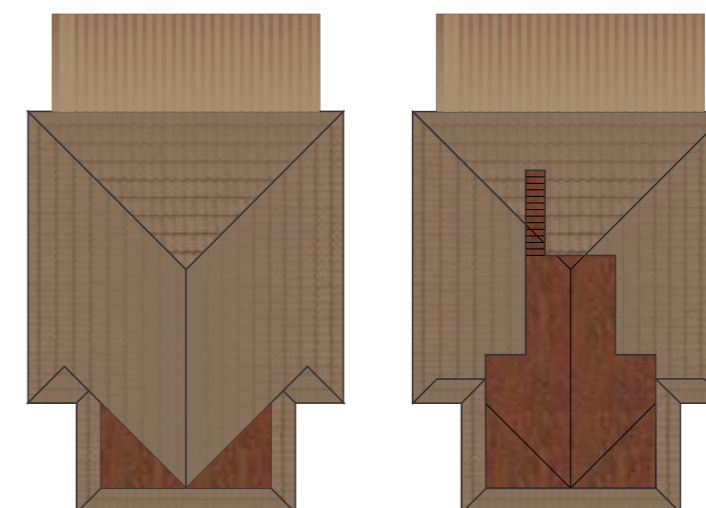
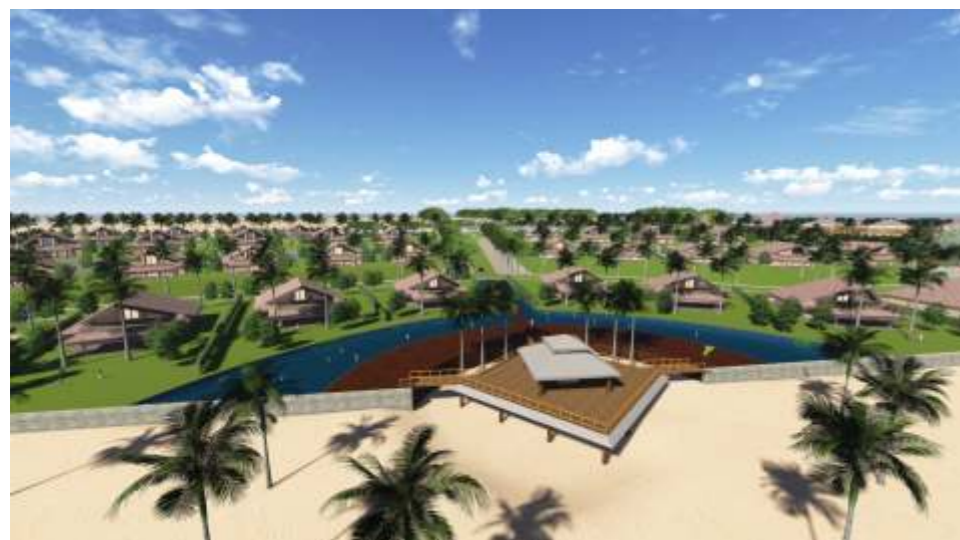


THE RESIDENCES CONDOMINIUM - Floorplans

Cumbuco Internacional - The Residences

Land Area = 30.000m²

34 Beach houses - 200m² each



THE RESIDENCES CONDOMINIUM - Images



Meio central - planta baixa e 3d

